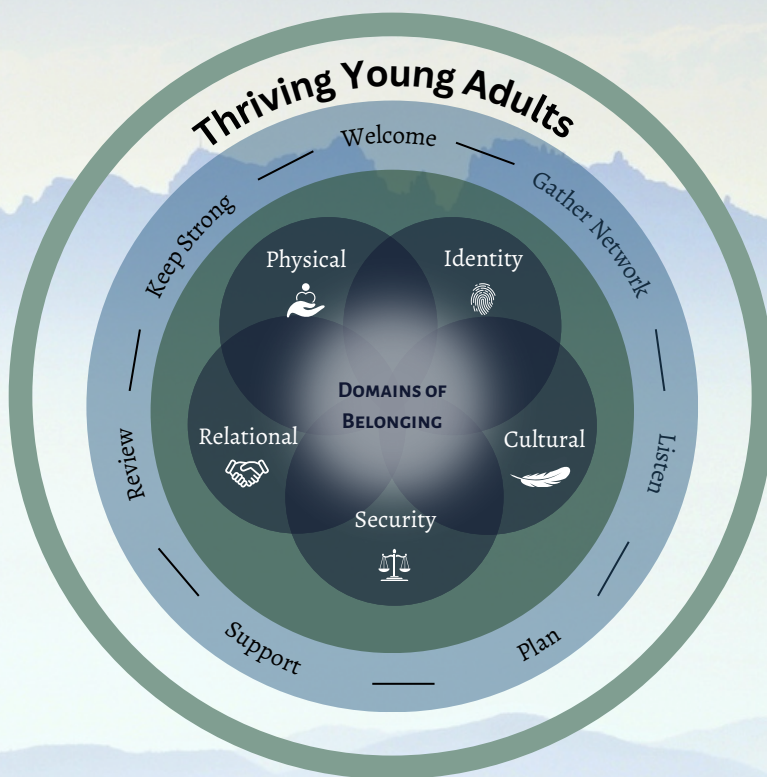


BUILDING POST MAJORITY PROGRAM FOUNDATIONS TO SUPPORT THRIVING YOUNG ADULTS

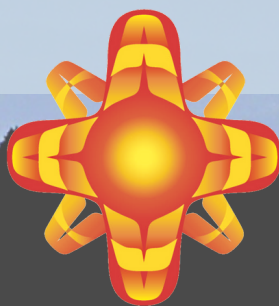
A resource to support program development



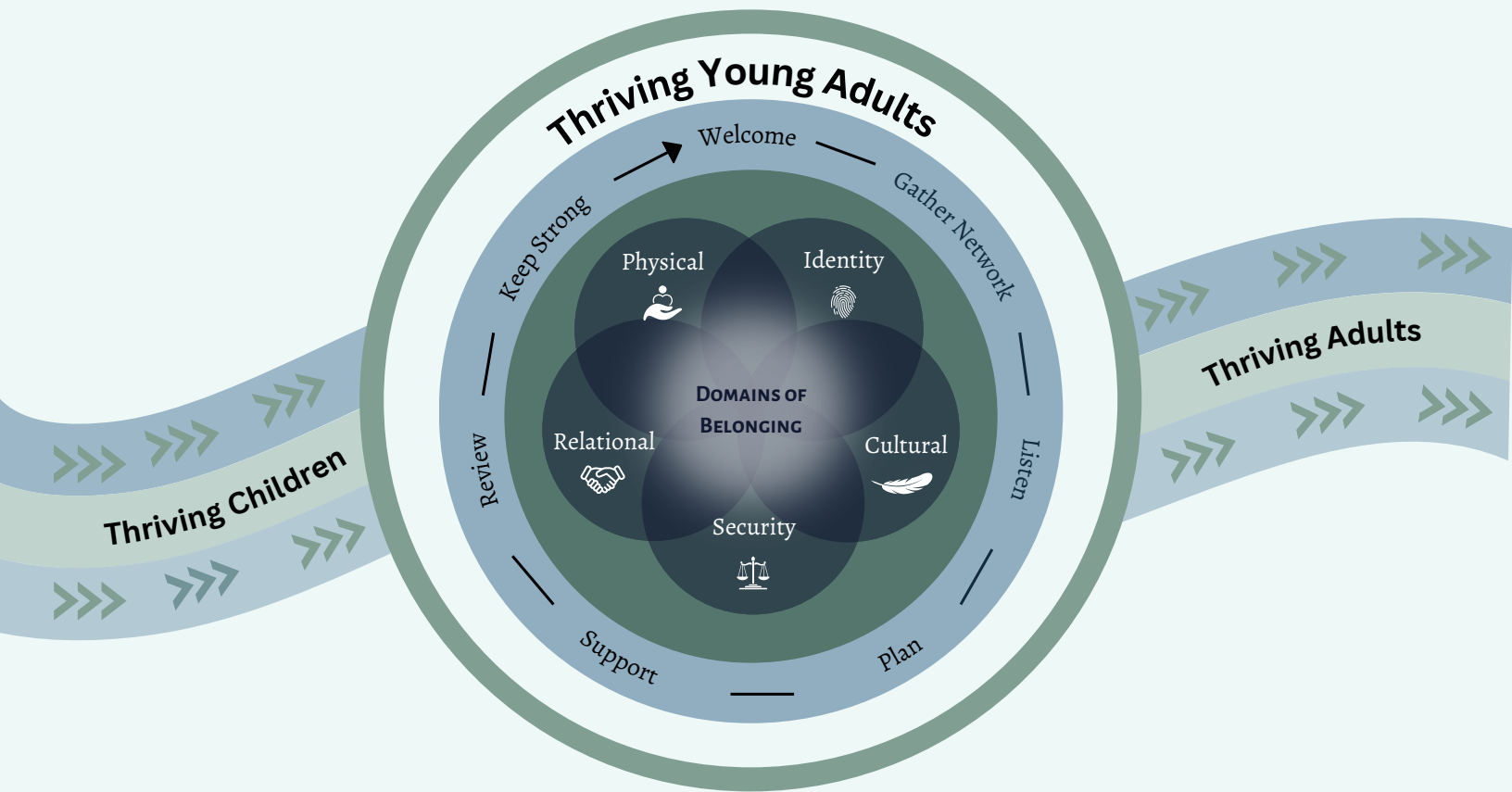
The Indigenous Child and Family Services Directors (ICSFD) Our Children Our Way Society

Our mission is to support Indigenous Nations' visions for jurisdiction and self-government pertaining to the well-being of their children and youth.

We aim to speak with a collective and expert voice on child welfare matters, with a focus on systemic changes to policy, practice, legislation, and funding to ensure the best interests of Indigenous children are being met.



PRACTICE FRAMEWORK



Our framework recognizes that post majority is just one interconnected stage within the lifecycle: Thriving children become thriving young adults who become thriving adults within thriving communities.

When coming together to support a young adult, we can look at some of the shared processes from the Aboriginal Policy and Practice Framework for considerations on how to engage and work with young adults, their families and communities in a good way.

The domains of belonging, adapted from Skye's Legacy, are essential in developing strong foundations. These are key areas to consider when supporting and planning with a young adult.

KEY SOURCES



Aboriginal Policy and Practice Framework



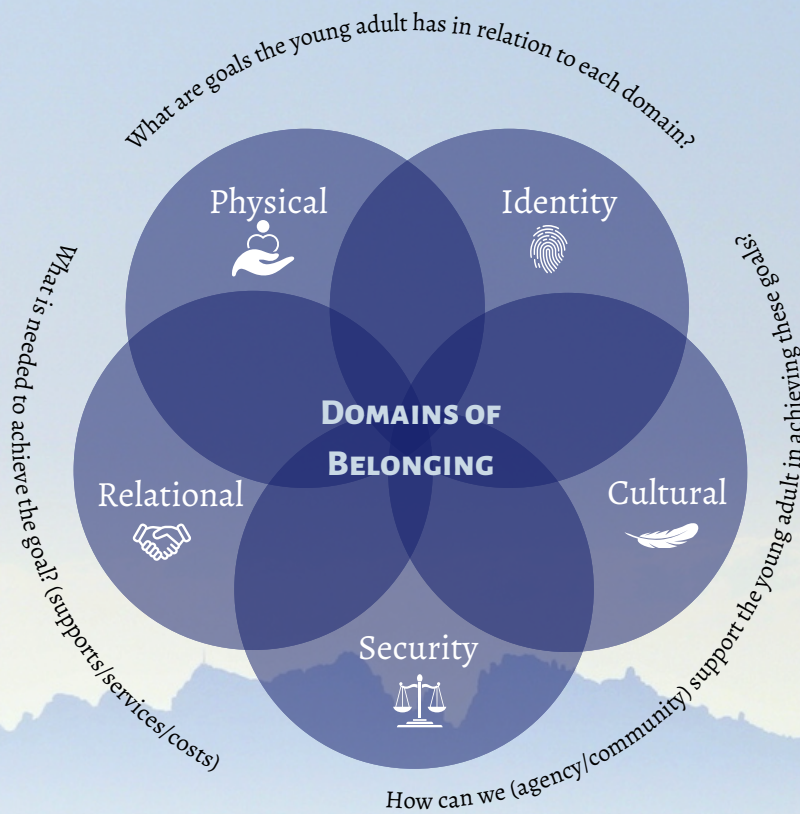
Funding First Nations child and family services (FNCFS): A performance budget approach to well-being



Skye's Legacy: The Importance of Belonging (RCYBC)



The Life Cycle Approach (CSFS)



Domain	Example Support Areas
Identity	<ul style="list-style-type: none"> Self continuity, self awareness, empowerment, education, professional and personal growth, life skills (incl., financial costs and support to acquire all forms of identification, training/certifications, access to pathways to develop natural skills and abilities), parenting support
Cultural	<ul style="list-style-type: none"> Connection to community, culture, land and language, being part of something bigger, coming of age teachings, valuing alternative ways of knowing (incl., ceremony, land-based wellness, support to access training on traditional foodways- hunting, gathering, preserving)
Security	<ul style="list-style-type: none"> Advocacy & rights, financial literacy, employment, income support, housing /having a safe home (incl. needs-based financial support - budgeting, money management, equitable basic income based on local realities and inflation, clothing and hygiene items, supports for maintaining housing)
Relational	<ul style="list-style-type: none"> Family (re)unification, social safety net, adult, peer & community supports, mentorship (i.e., support in connecting with Elders and Knowledge holders, family (generational) counselling, support in the development and understanding of kinship ties, family tree(s), and genogram(s)).
Physical	<ul style="list-style-type: none"> Ensuring the wellbeing of body, mind, & spirit, mental health (i.e., sexual and gender identity health supports, holistic health services, nutrition training, access to physical activity, rehabilitative supports, counselling)

VISIONING POST MAJORITY PROGRAMS: THE FUTURE HOUSE APPROACH*



Use a drawing of a Future House to represent a place and time in the future where your post majority program is established and the young adults in your community are supported to thrive within each domain of belonging.

1

Imagine your future house of post majority programs and services. What would you be doing in your future house to support youth and young adults to be supported in each domain of belonging?

DOMAINS

IDENTITY

RELATIONAL

PHYSICAL

SECURITY

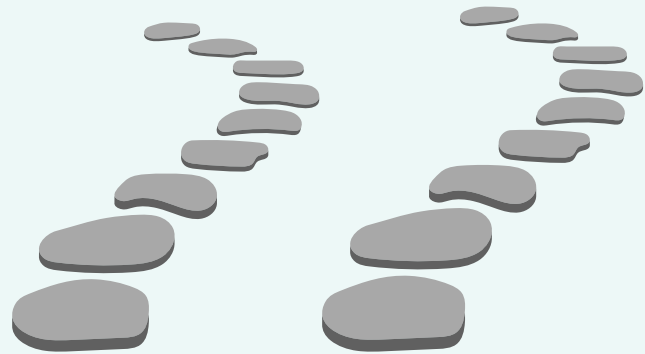
CULTURAL

2

Think about what it will look like when your future house is fully built. What would young adults say about it? What would elders say?

3

Reflect on where you are on the pathway to your future house. Are there any programs in place that you are proud of and want to grow? What is needed to continue building this future house?



*The Future House model was developed by Sonja Parker, and is often used for safety planning.

FEDERAL AND PROVINCIAL (BC) POST MAJORITY RESOURCES



AgedOut.com



SAJE (Strengthening Abilities and Journeys of Empowerment, MCFD)



FNCFS Transitional Terms and Conditions (ISC)



Post-majority support services for First Nations youth and young adults (ISC)



ourchildrenourway.ca